

Horizontal scale
0km 10km 20km

Legend

Vertical Exaggeration: 80x



Department of Sustainability and Environment
West Gippsland - Data Collation and Conceptualisation

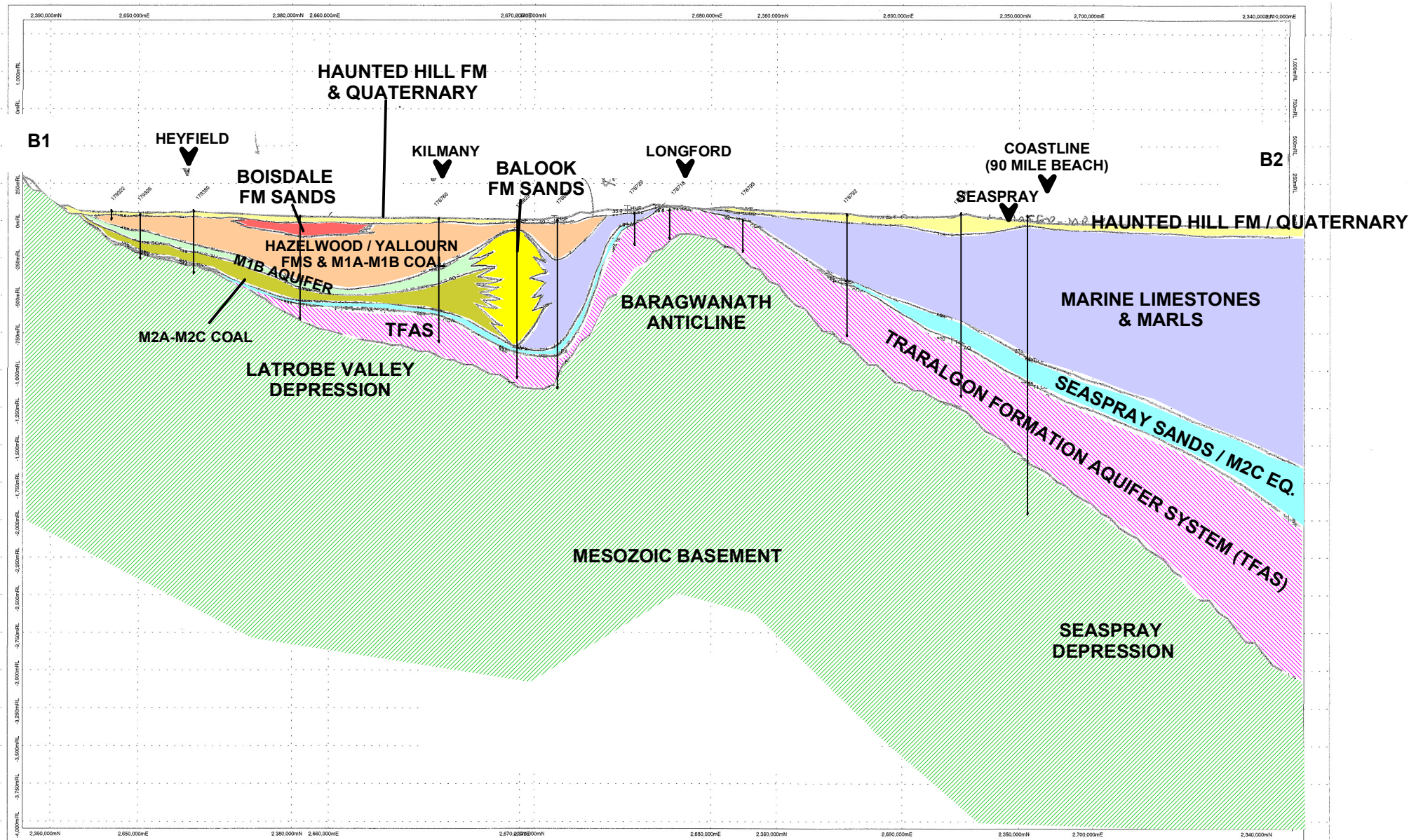
Job Number 31-22410
Revision A
Date 25 June 2008

Geological Cross-Section A:
East - West Through Gippsland Basin

Figure 9

path: G:\31\22410\WP\Graphics\WestGipps\2011_Cross-sectionA_GippsEW.srf Created by C Nicol

(c) 2007. While GHD has taken care to ensure the accuracy of this product, GHD (LEGAL ENTITY) and DATA SUPPLIER(S) make no representations or warranties about its accuracy, completeness or suitability for any particular purpose. GHD and DATA SUPPLIER(S) cannot accept liability of any kind (whether in contract, tort or otherwise) for any expenses, losses, damages and/or costs (including indirect or consequential damage) which are or may be incurred as a result of the product being inaccurate, incomplete or unsuitable in any way and for any reason.



Horizontal scale
0km 5km 10km

Legend

Vertical Exaggeration: 10x

path: G:/31/22410/WP/Graphics/WestGipps/2012_Cross-sectionB_GippsNS.srf Created by C Nicol



Department of Sustainability and Environment
West Gippsland - Data Collation and Conceptualisation

Job Number	31-22410
Revision	A
Date	25 June 2008

Geological Cross Section B:
North - South Through Gippsland Basin

Figure 10

(c) 2007. While GHD has taken care to ensure the accuracy of this product, GHD (LEGAL ENTITY) and DATA SUPPLIER(S) make no representations or warranties about its accuracy, completeness or suitability for any particular purpose. GHD and DATA SUPPLIER(S) cannot accept liability of any kind (whether in contract, tort or otherwise) for any expenses, losses, damages and/or costs (including indirect or consequential damage) which are or may be incurred as a result of the product being inaccurate, incomplete or unsuitable in any way and for any reason.