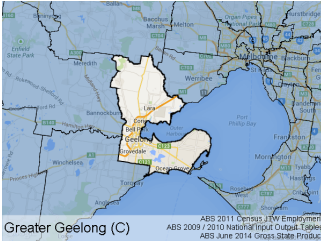


## GRP Expenditure Report



The **Gross Regional Product** for Greater Geelong (C) was calculated using the **Expenditure** method.

GRP is the total value of **final** goods and services produced in the region over the period of one year. As can be seen from the table, this includes exports but subtracts imports.

GRP can be measured by adding up all forms of **final** expenditure

- consumption by households
- consumption by governments
- additions or increases to assets (minus disposals)
- exports (minus imports)

This calculation does not include intermediate expenditure as this would lead to double counting (the wheat and flour in a loaf of bread).

<b>GRP Expenditure Method</b>	<b>\$M</b>
Household Consumption	\$8,625.430
Government Consumption	\$2,572.083
Private Gross Fixed Capital Expenditure	\$2,952.713
Public Gross Fixed Capital Expenditure	\$879.492
<b>Gross Regional Expenses</b>	<b>\$15,029.718</b>
plus Regional Exports	\$9,815.208
minus Domestic Imports	-\$9,676.392
minus Overseas Imports	-\$4,321.800
<b>Gross Regional Product</b>	<b>\$10,846.735</b>
Population	210,873
Per Capita GRP (\$'000)	\$51.437
Per Worker GRP (\$'000)	\$138.048