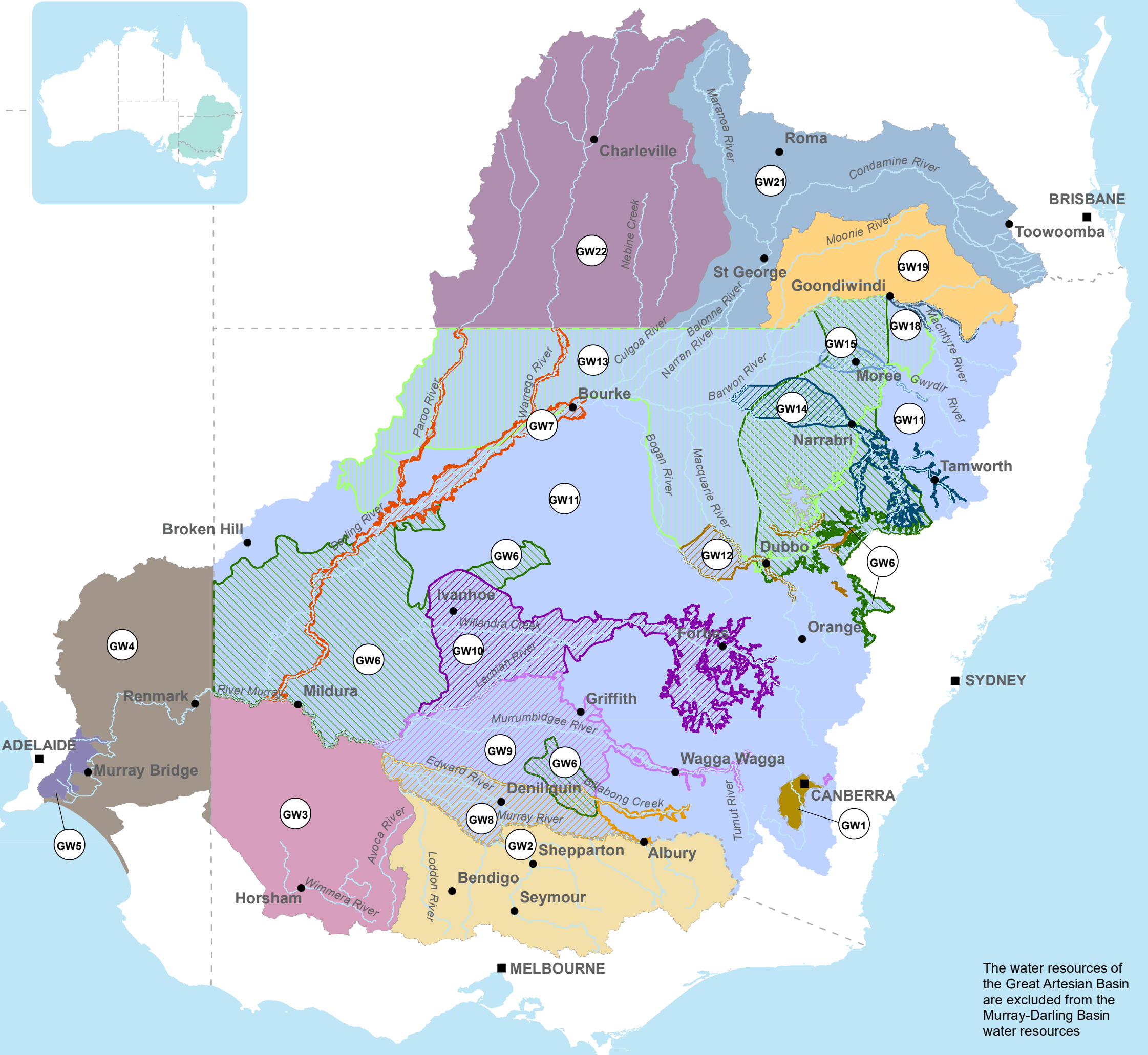


# Murray-Darling Basin Water Resource Plan Areas — Groundwater



The water resources of the Great Artesian Basin are excluded from the Murray-Darling Basin water resources

- capital city
- main town
- - - state border
- main rivers

- GW1 Australian Capital Territory (groundwater)
- GW2 Goulburn-Murray
- GW3 Wimmera-Mallee (groundwater)
- GW4 South Australian Murray Region
- GW5 Eastern Mount Lofty Ranges
- GW6 NSW Murray-Darling Basin Porous Rock
- GW7 Darling Alluvium
- GW8 Murray Alluvium
- GW9 Murrumbidgee Alluvium
- GW10 Lachlan Alluvium
- GW11 NSW Murray-Darling Basin Fractured Rock
- GW12 Macquarie-Castlereagh Alluvium
- GW13 NSW Great Artesian Basin Shallow
- GW14 Namoi Alluvium
- GW15 Gwydir Alluvium
- GW18 NSW Border Rivers Alluvium
- GW19 Queensland Border Rivers-Moonie
- GW21 Condamine-Balonne
- GW22 Warrego-Paroo-Nebine

Note: The Basin Plan amendments that came into effect on 3 July 2018 merged six groundwater WRP areas into three, as a result GW16, GW17 and GW20 no longer exist.

