



Self-managed super funds

Annual statistics overview 2023–24

Overview

(at 30 June 2025)

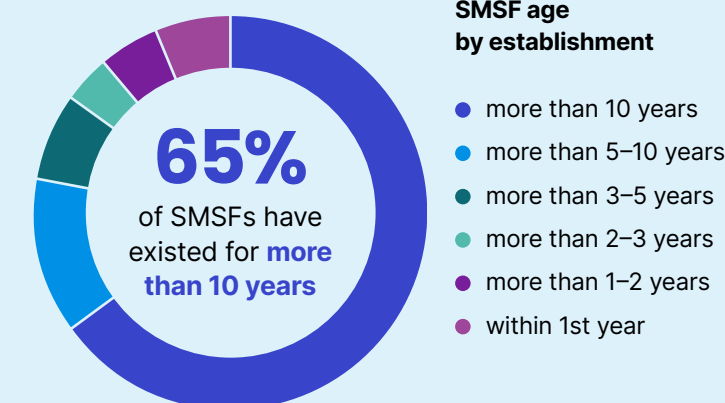
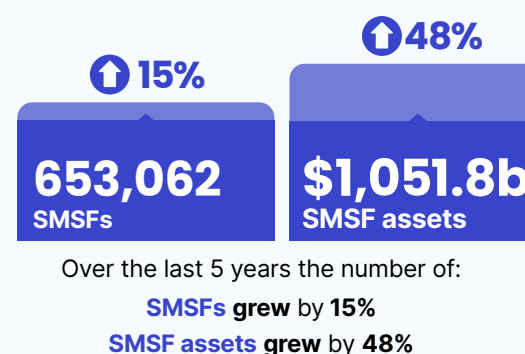
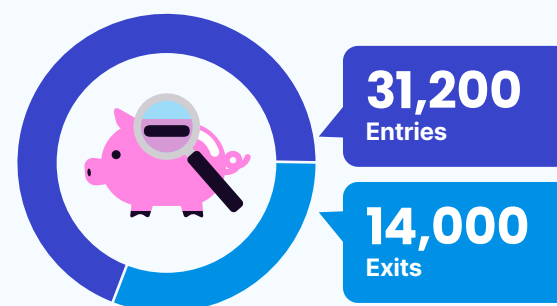


Establishments and wind-ups each year

Over the past 5 years there were on average:

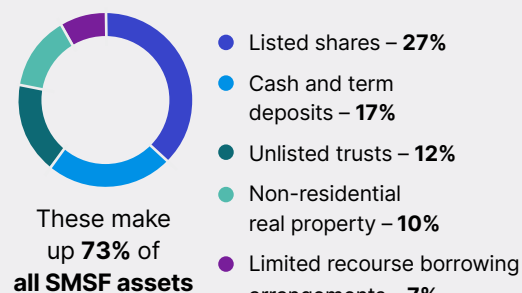
31,200
entries

14,000
exits

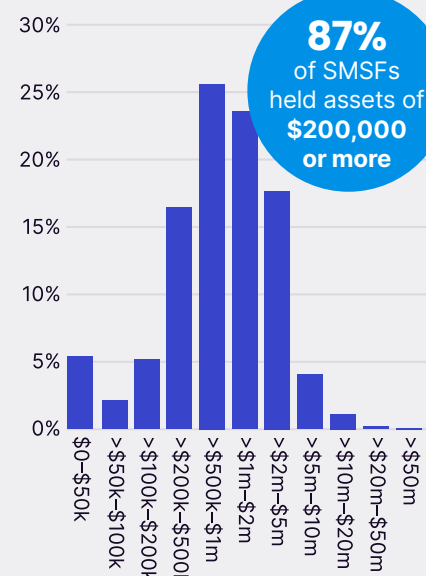


Assets

The top 5 assets held by SMSFs

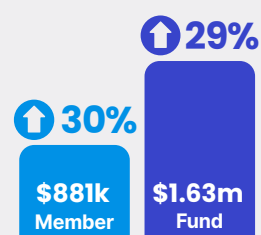


Proportion of SMSFs by asset range



Average balance

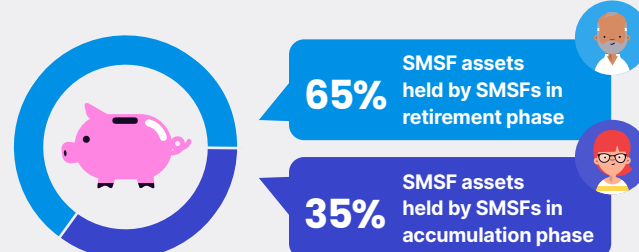
Over the last 5 years average assets per member increased **30%** to **\$881,000** and average assets per SMSF increased **29%** to **\$1.63 million**.



Return on assets

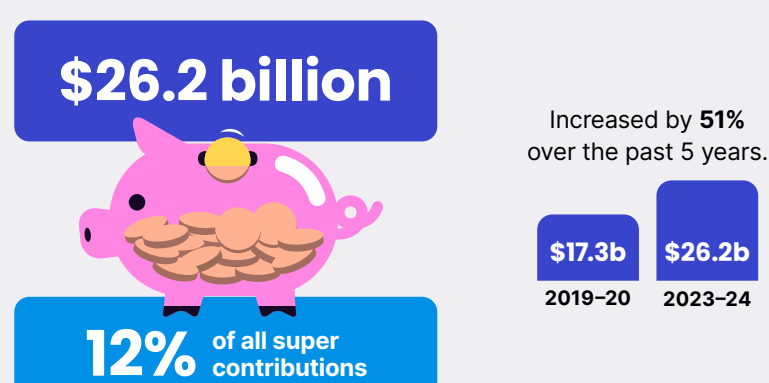


SMSF assets by phase

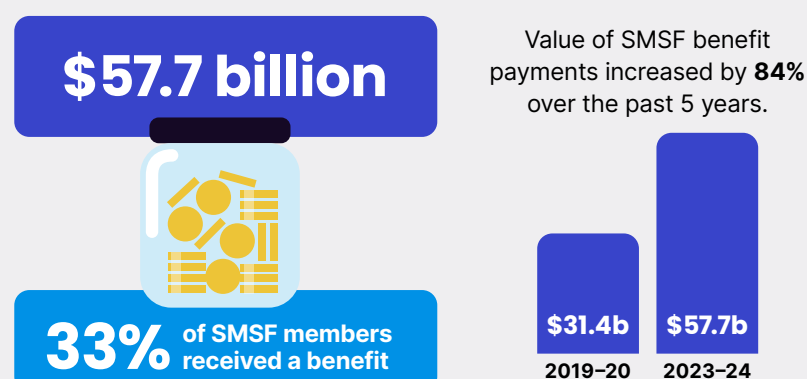


Ins and outs

SMSF contributions

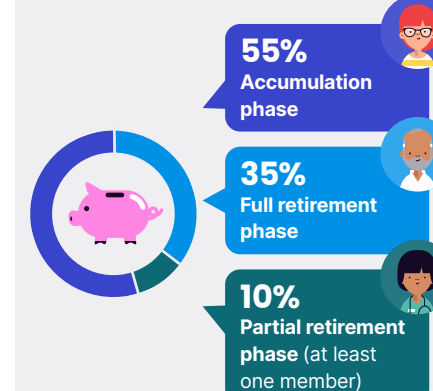


SMSF benefit payments



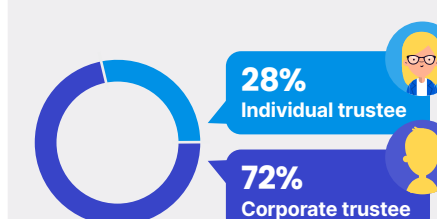
Members

SMSFs by phase



Corporate vs individual trustees

(at 30 June 2025)



Median age of members

(at 30 June 2025)

Median age of all SMSF members was **62 years**.



Median age of members of newly established funds in 2023–24 was **46 years**.

Members by gender

